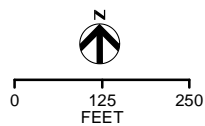


TREE PROTECTION NOTES:
 - TREE PROTECTION FENCING WILL BE INSTALLED AS NECESSARY TO EXCLUDE CONSTRUCTION ACTIVITIES.
 - NO CLEARING OR GRADING WILL OCCUR IN TREE PRESERVATION AREAS AND NONE OF THESE AREAS WILL BE USED FOR CONSTRUCTION STAGING.
 - THE UNDER-STORIES OF THESE AREAS WILL NOT BE CLEARED.



<p>HERITAGE TREES</p> <ul style="list-style-type: none"> ● PRESERVED ● REMOVED 	<ul style="list-style-type: none"> PROPOSED GRADING LIMITS EXISTING ROW ACQUIRED ROW WORKSPACE EASEMENT FLOODPLAIN BUFFER REGULATORY FLOODPLAIN
<ul style="list-style-type: none"> FLOODPLAIN REMOVAL ESA REMOVAL UPLAND REMOVAL FLOODPLAIN PRESERVATION ESA PRESERVATION UPLAND PRESERVATION 	

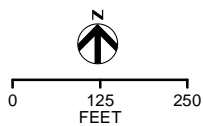
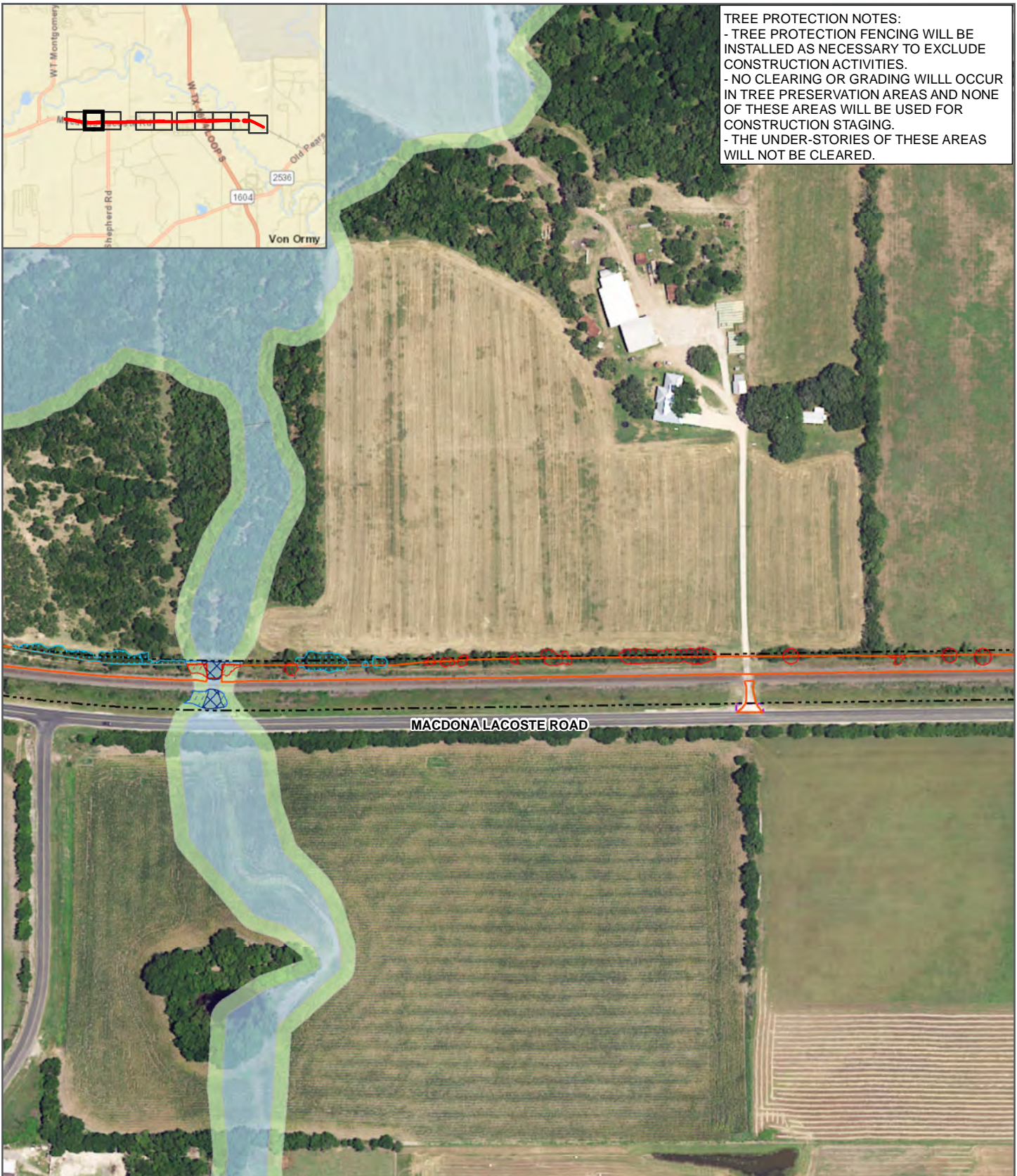
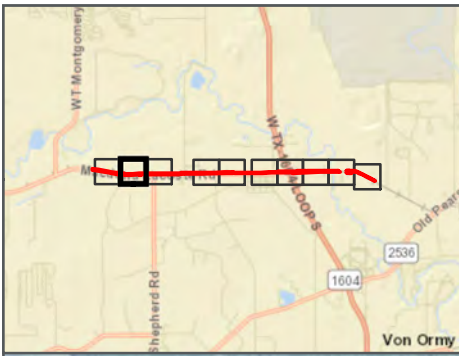
TREE SURVEY
 UNION PACIFIC RAILROAD
 DEL RIO SUBDIVISION
 MP 225.85 TO MP 228.78
 BEXAR SIDING RAIL
 BEXAR COUNTY, TX

JAN 2023

FIGURE 1-1



TREE PROTECTION NOTES:
 - TREE PROTECTION FENCING WILL BE INSTALLED AS NECESSARY TO EXCLUDE CONSTRUCTION ACTIVITIES.
 - NO CLEARING OR GRADING WILL OCCUR IN TREE PRESERVATION AREAS AND NONE OF THESE AREAS WILL BE USED FOR CONSTRUCTION STAGING.
 - THE UNDER-STORIES OF THESE AREAS WILL NOT BE CLEARED.



<p>HERITAGE TREES</p> <ul style="list-style-type: none"> ● PRESERVED ● REMOVED FLOODPLAIN REMOVAL ESA REMOVAL UPLAND REMOVAL FLOODPLAIN PRESERVATION ESA PRESERVATION UPLAND PRESERVATION 	<ul style="list-style-type: none"> PROPOSED GRADING LIMITS EXISTING ROW ACQUIRED ROW WORKSPACE EASEMENT FLOODPLAIN BUFFER REGULATORY FLOODPLAIN
---	--

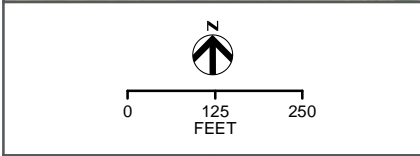
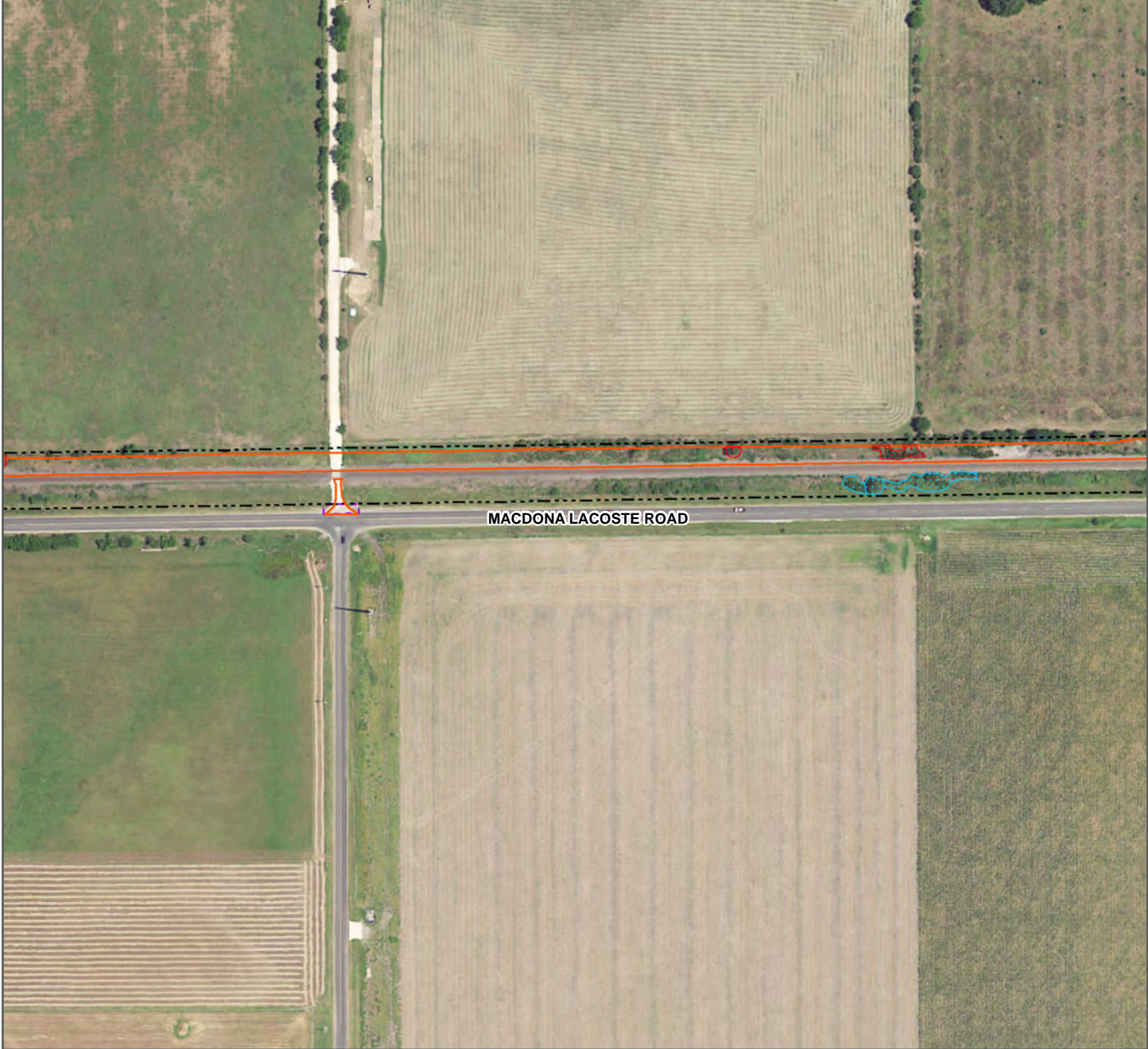
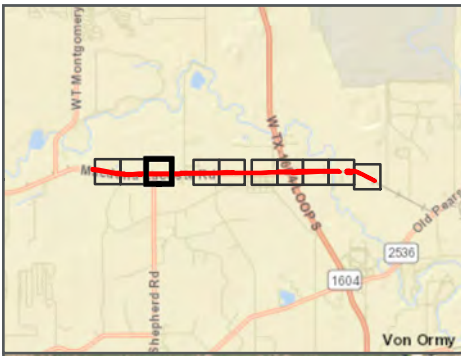


TREE SURVEY
 UNION PACIFIC RAILROAD
 DEL RIO SUBDIVISION
 MP 225.85 TO MP 228.78
 BEXAR SIDING RAIL
 BEXAR COUNTY, TX

JAN 2023

FIGURE 1-2

TREE PROTECTION NOTES:
 - TREE PROTECTION FENCING WILL BE INSTALLED AS NECESSARY TO EXCLUDE CONSTRUCTION ACTIVITIES.
 - NO CLEARING OR GRADING WILL OCCUR IN TREE PRESERVATION AREAS AND NONE OF THESE AREAS WILL BE USED FOR CONSTRUCTION STAGING.
 - THE UNDER-STORIES OF THESE AREAS WILL NOT BE CLEARED.



<p>HERITAGE TREES</p> <ul style="list-style-type: none"> ● PRESERVED ● REMOVED 	<ul style="list-style-type: none"> FLOODPLAIN REMOVAL ESA REMOVAL UPLAND REMOVAL FLOODPLAIN PRESERVATION ESA PRESERVATION UPLAND PRESERVATION 	<ul style="list-style-type: none"> PROPOSED GRADING LIMITS EXISTING ROW ACQUIRED ROW WORKSPACE EASEMENT FLOODPLAIN BUFFER REGULATORY FLOODPLAIN
---	--	--

TREE SURVEY
 UNION PACIFIC RAILROAD
 DEL RIO SUBDIVISION
 MP 225.85 TO MP 228.78
 BEXAR SIDING RAIL
 BEXAR COUNTY, TX

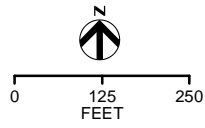
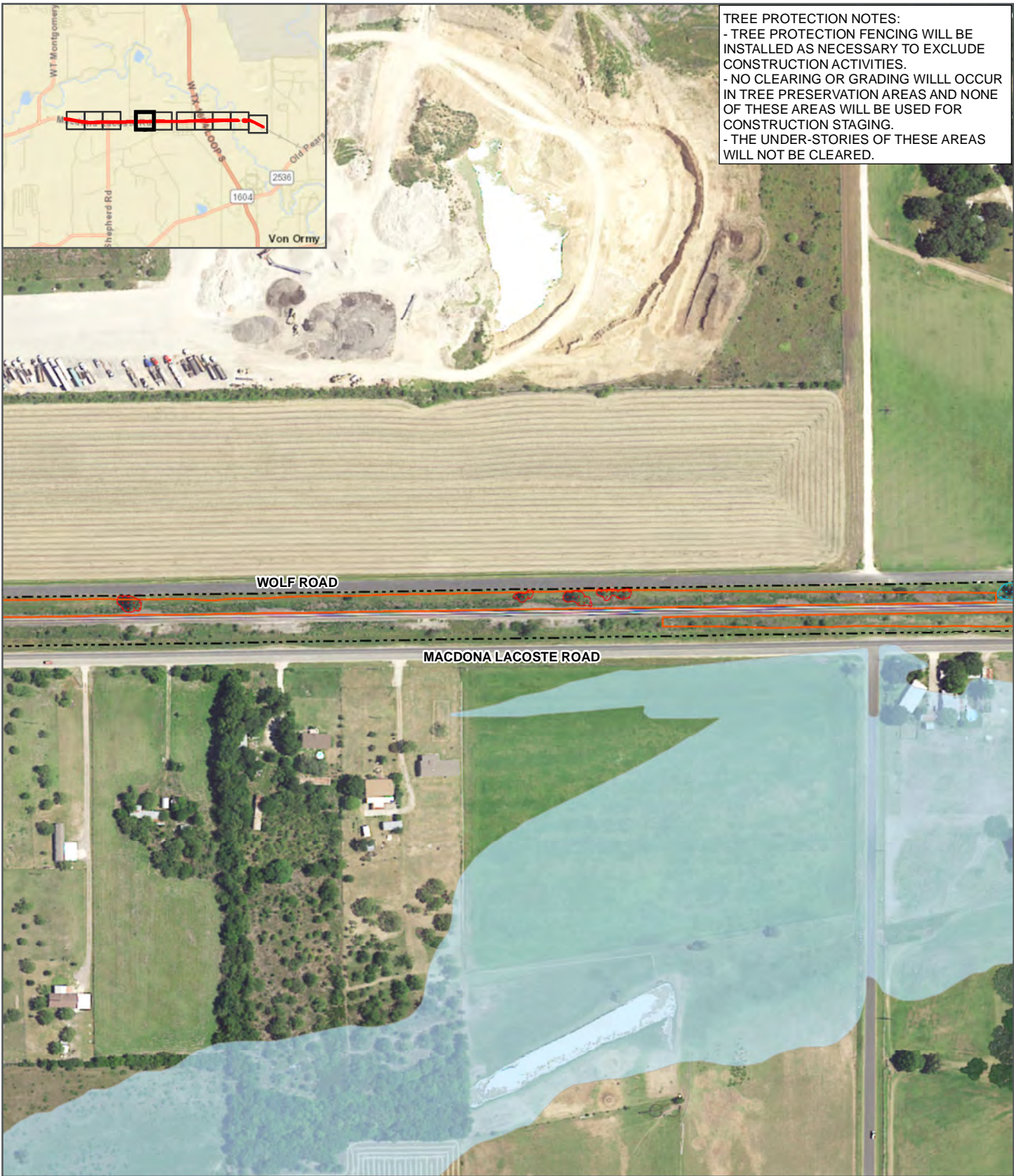


JAN 2023

FIGURE 1-3

TREE PROTECTION NOTES:

- TREE PROTECTION FENCING WILL BE INSTALLED AS NECESSARY TO EXCLUDE CONSTRUCTION ACTIVITIES.
- NO CLEARING OR GRADING WILL OCCUR IN TREE PRESERVATION AREAS AND NONE OF THESE AREAS WILL BE USED FOR CONSTRUCTION STAGING.
- THE UNDER-STORIES OF THESE AREAS WILL NOT BE CLEARED.



- | | |
|---|---|
| <ul style="list-style-type: none"> ● HERITAGE TREES PRESERVED ● HERITAGE TREES REMOVED ▨ FLOODPLAIN REMOVAL ▨ ESA REMOVAL ▨ UPLAND REMOVAL ▨ FLOODPLAIN PRESERVATION ▨ ESA PRESERVATION ▨ UPLAND PRESERVATION | <ul style="list-style-type: none"> ▭ PROPOSED GRADING LIMITS --- EXISTING ROW --- ACQUIRED ROW ▭ WORKSPACE EASEMENT ▭ FLOODPLAIN BUFFER ▭ REGULATORY FLOODPLAIN |
|---|---|

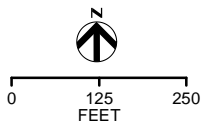
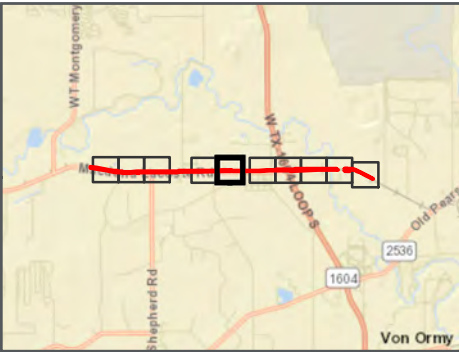


TREE SURVEY
 UNION PACIFIC RAILROAD
 DEL RIO SUBDIVISION
 MP 225.85 TO MP 228.78
 BEXAR SIDING RAIL
 BEXAR COUNTY, TX

JAN 2023

FIGURE 1-4

TREE PROTECTION NOTES:
 - TREE PROTECTION FENCING WILL BE INSTALLED AS NECESSARY TO EXCLUDE CONSTRUCTION ACTIVITIES.
 - NO CLEARING OR GRADING WILL OCCUR IN TREE PRESERVATION AREAS AND NONE OF THESE AREAS WILL BE USED FOR CONSTRUCTION STAGING.
 - THE UNDER-STORIES OF THESE AREAS WILL NOT BE CLEARED.



<p>HERITAGE TREES</p> <ul style="list-style-type: none"> ● PRESERVED ● REMOVED 	<ul style="list-style-type: none"> PROPOSED GRADING LIMITS EXISTING ROW ACQUIRED ROW WORKSPACE EASEMENT FLOODPLAIN BUFFER REGULATORY FLOODPLAIN
<ul style="list-style-type: none"> FLOODPLAIN REMOVAL ESA REMOVAL UPLAND REMOVAL FLOODPLAIN PRESERVATION ESA PRESERVATION UPLAND PRESERVATION 	

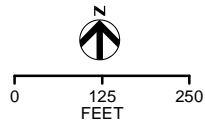
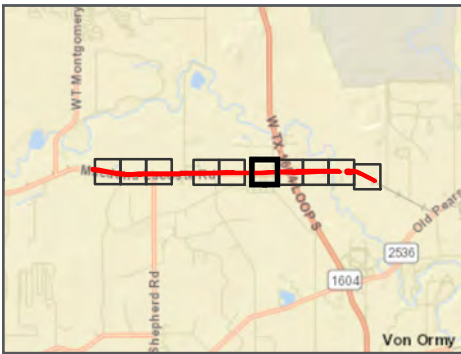
TREE SURVEY
 UNION PACIFIC RAILROAD
 DEL RIO SUBDIVISION
 MP 225.85 TO MP 228.78
 BEXAR SIDING RAIL
 BEXAR COUNTY, TX

JAN 2023

FIGURE 1-5



TREE PROTECTION NOTES:
 - TREE PROTECTION FENCING WILL BE INSTALLED AS NECESSARY TO EXCLUDE CONSTRUCTION ACTIVITIES.
 - NO CLEARING OR GRADING WILL OCCUR IN TREE PRESERVATION AREAS AND NONE OF THESE AREAS WILL BE USED FOR CONSTRUCTION STAGING.
 - THE UNDER-STORIES OF THESE AREAS WILL NOT BE CLEARED.



<p>HERITAGE TREES</p> <ul style="list-style-type: none"> ● PRESERVED ● REMOVED FLOODPLAIN REMOVAL ESA REMOVAL UPLAND REMOVAL FLOODPLAIN PRESERVATION ESA PRESERVATION UPLAND PRESERVATION 	<ul style="list-style-type: none"> PROPOSED GRADING LIMITS EXISTING ROW ACQUIRED ROW WORKSPACE EASEMENT FLOODPLAIN BUFFER REGULATORY FLOODPLAIN
---	---

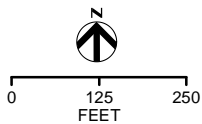
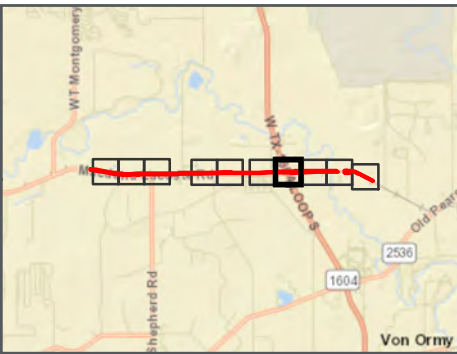


TREE SURVEY
 UNION PACIFIC RAILROAD
 DEL RIO SUBDIVISION
 MP 225.85 TO MP 228.78
 BEXAR SIDING RAIL
 BEXAR COUNTY, TX

JAN 2023

FIGURE 1-6

TREE PROTECTION NOTES:
 - TREE PROTECTION FENCING WILL BE INSTALLED AS NECESSARY TO EXCLUDE CONSTRUCTION ACTIVITIES.
 - NO CLEARING OR GRADING WILL OCCUR IN TREE PRESERVATION AREAS AND NONE OF THESE AREAS WILL BE USED FOR CONSTRUCTION STAGING.
 - THE UNDER-STORIES OF THESE AREAS WILL NOT BE CLEARED.



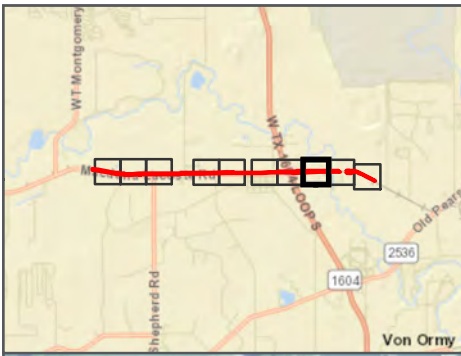
<p>HERITAGE TREES</p> <ul style="list-style-type: none"> ● PRESERVED ● REMOVED 	<ul style="list-style-type: none"> PROPOSED GRADING LIMITS EXISTING ROW ACQUIRED ROW WORKSPACE EASEMENT FLOODPLAIN BUFFER REGULATORY FLOODPLAIN
<ul style="list-style-type: none"> FLOODPLAIN REMOVAL ESA REMOVAL UPLAND REMOVAL FLOODPLAIN PRESERVATION ESA PRESERVATION UPLAND PRESERVATION 	

TREE CANOPY
 UNION PACIFIC RAILROAD
 DEL RIO SUBDIVISION
 MP 225.85 TO MP 228.78
 BEXAR SIDING RAIL
 BEXAR COUNTY, TX

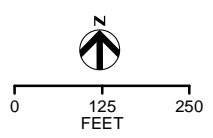


JAN 2023

FIGURE 1-7



TREE PROTECTION NOTES:
 - TREE PROTECTION FENCING WILL BE INSTALLED AS NECESSARY TO EXCLUDE CONSTRUCTION ACTIVITIES.
 - NO CLEARING OR GRADING WILL OCCUR IN TREE PRESERVATION AREAS AND NONE OF THESE AREAS WILL BE USED FOR CONSTRUCTION STAGING.
 - THE UNDER-STORIES OF THESE AREAS WILL NOT BE CLEARED.



- | | |
|--|---|
| <ul style="list-style-type: none"> ● HERITAGE TREES PRESERVED ● HERITAGE TREES REMOVED FLOODPLAIN REMOVAL ESA REMOVAL UPLAND REMOVAL FLOODPLAIN PRESERVATION ESA PRESERVATION UPLAND PRESERVATION | <ul style="list-style-type: none"> PROPOSED GRADING LIMITS EXISTING ROW ACQUIRED ROW WORKSPACE EASEMENT FLOODPLAIN BUFFER REGULATORY FLOODPLAIN |
|--|---|

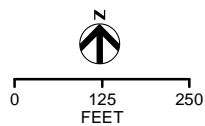
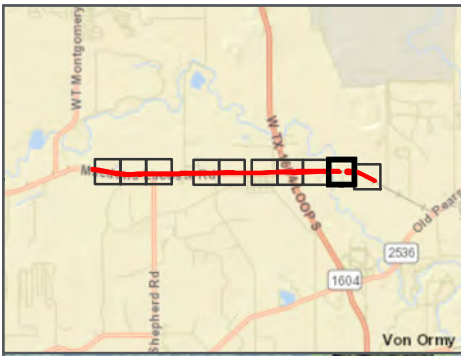


TREE SURVEY
 UNION PACIFIC RAILROAD
 DEL RIO SUBDIVISION
 MP 225.85 TO MP 228.78
 BEXAR SIDING RAIL
 BEXAR COUNTY, TX

JAN 2023

FIGURE 1-8

TREE PROTECTION NOTES:
 - TREE PROTECTION FENCING WILL BE INSTALLED AS NECESSARY TO EXCLUDE CONSTRUCTION ACTIVITIES.
 - NO CLEARING OR GRADING WILL OCCUR IN TREE PRESERVATION AREAS AND NONE OF THESE AREAS WILL BE USED FOR CONSTRUCTION STAGING.
 - THE UNDER-STORIES OF THESE AREAS WILL NOT BE CLEARED.



<p>HERITAGE TREES</p> <ul style="list-style-type: none"> ● PRESERVED ● REMOVED 	<ul style="list-style-type: none"> FLOODPLAIN REMOVAL ESA REMOVAL UPLAND REMOVAL FLOODPLAIN PRESERVATION ESA PRESERVATION UPLAND PRESERVATION 	<ul style="list-style-type: none"> PROPOSED GRADING LIMITS EXISTING ROW ACQUIRED ROW WORKSPACE EASEMENT FLOODPLAIN BUFFER REGULATORY FLOODPLAIN
---	--	--



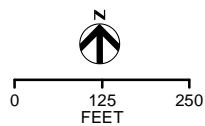
TREE CANOPY
 UNION PACIFIC RAILROAD
 DEL RIO SUBDIVISION
 MP 225.85 TO MP 228.78
 BEXAR SIDING RAIL
 BEXAR COUNTY, TX

JAN 2023

FIGURE 1-9



TREE PROTECTION NOTES:
 - TREE PROTECTION FENCING WILL BE INSTALLED AS NECESSARY TO EXCLUDE CONSTRUCTION ACTIVITIES.
 - NO CLEARING OR GRADING WILL OCCUR IN TREE PRESERVATION AREAS AND NONE OF THESE AREAS WILL BE USED FOR CONSTRUCTION STAGING.
 - THE UNDER-STORIES OF THESE AREAS WILL NOT BE CLEARED.



HERITAGE TREES	PROPOSED GRADING LIMITS
● PRESERVED	--- EXISTING ROW
● REMOVED	- - - ACQUIRED ROW
▨ FLOODPLAIN REMOVAL	▨ WORKSPACE EASEMENT
▨ ESA REMOVAL	▨ FLOODPLAIN BUFFER
▨ UPLAND REMOVAL	▨ REGULATORY FLOODPLAIN
▨ FLOODPLAIN PRESERVATION	
▨ ESA PRESERVATION	
▨ UPLAND PRESERVATION	

TREE SURVEY
 UNION PACIFIC RAILROAD
 DEL RIO SUBDIVISION
 MP 225.85 TO MP 228.78
 BEXAR SIDING RAIL
 BEXAR COUNTY, TX



JAN 2023

FIGURE 1-10